

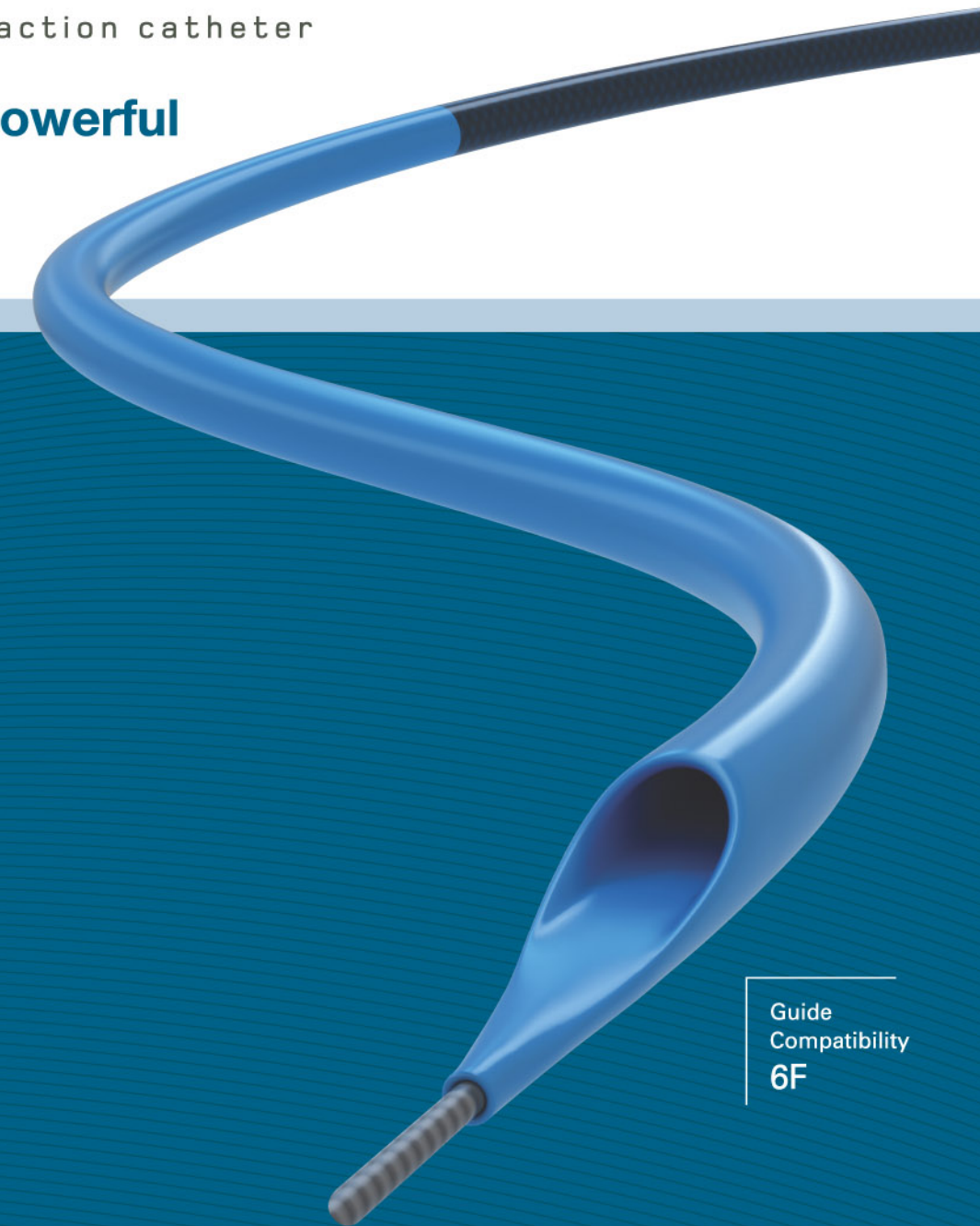


Hunter	
Summary of Technical Specifications	
Catheter Design	Rapid Exchange
Aspiration Lumen (Distal)	0.947 mm ²
Aspiration Lumen (Proximal)	1.040 mm ²
Usable Catheter Length	140 cm
Coating	Highly resistant Hydrophilic
Tip Entry Profile	0.017"
Proximal outer Diameter	1.40 mm
Distal outer Diameter	1.7-1.6 mm
Radiopaque markers	4 spaced 10 - 20 - 30 mm from first marker for lesion length measurement. 1 at the exit port
Guide Wire Compatibility	0.014"
Guiding Catheter Compatibility	6 F

Hunter[®]

Hydrophilic extraction catheter

Smooth and powerful



Guide
Compatibility
6F

Device restricted for use by a Doctor or on the order of a physician.
Prior to use, please read all precautionary statements and possible complications specified in attached instructions for use.



IBERHOSPITEX S.A. · Avda. Catalunya, 4 · 08185 Lliçà de Vall, Barcelona, Spain
Tel +34 93 843 60 34 · Fax +34 93 843 61 11 · info@iht.es · www.iht.es



05/2009



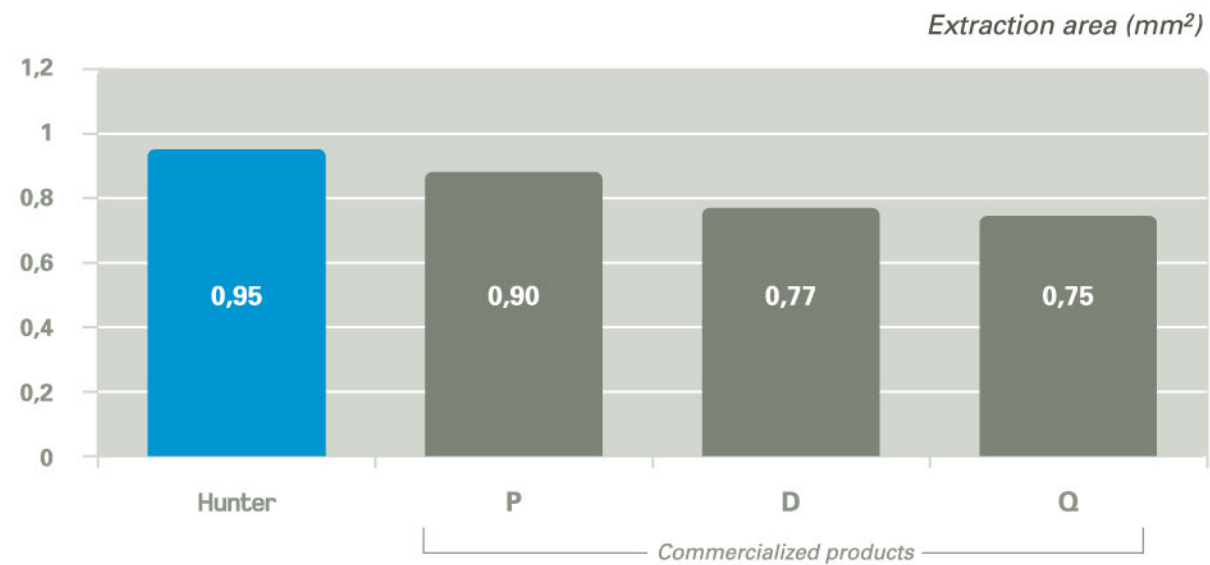
Hunter[®]

Hydrophilic extraction catheter

Hunter is an extraction catheter indicated for the removal of fresh, soft emboli and thrombi from vessels in the coronary system.

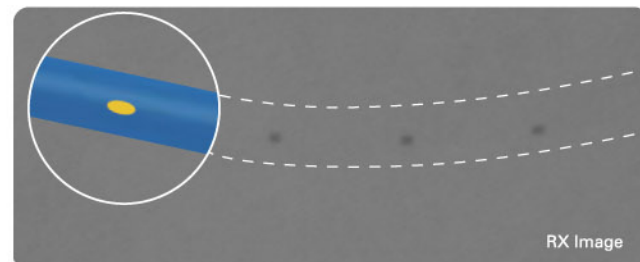


Hunter's optimal lumen design provides a higher extraction performance

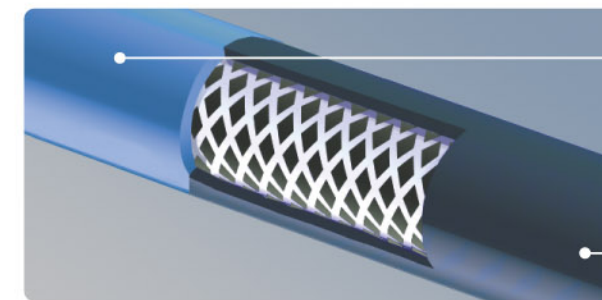


Fast thrombus management

- Excellent lesion Crossability.
- Easy lesion length measurement through radiopaque markers.



Easy and soft navigation



Distal
- Flexibility & Trackability.

Proximal
- Excellent Pushability.
- High kinking resistance.

Proximal kinking (mm)

