



Active Small			
Diameter (mm)	Length (mm)	Profile (inches)	Reference
2,00	9	0,034	57209
2,00	14	0,034	57204
2,00	19	0,034	57200
2,00	23	0,034	57203
2,00	28	0,034	57208
2,00	36	0,034	57206
2,25	9	0,035	57229
2,25	14	0,035	57224
2,25	19	0,035	57220
2,25	23	0,035	57223
2,25	28	0,035	57228
2,25	36	0,035	57226
2,50	9	0,037	57259
2,50	14	0,037	57254
2,50	19	0,037	57250
2,50	23	0,037	57253
2,50	28	0,037	57258
2,50	36	0,037	57256
2,75	9	0,038	57279
2,75	14	0,038	57274
2,75	19	0,038	57270
2,75	23	0,038	57273
2,75	28	0,038	57278
2,75	36	0,038	57276

Active			
Diameter (mm)	Length (mm)	Profile (inches)	Reference
3,00	9	0,038	57309
3,00	14	0,038	57314
3,00	18	0,038	57318
3,00	23	0,038	57323
3,00	28	0,038	57328
3,00	36	0,038	57336
3,50	9	0,039	57359
3,50	14	0,039	57354
3,50	18	0,039	57358
3,50	23	0,039	57353
3,50	28	0,039	57350
3,50	36	0,039	57356
4,00	9	0,040	57409
4,00	14	0,040	57414
4,00	18	0,040	57418
4,00	23	0,040	57423
4,00	28	0,040	57428
4,00	36	0,040	57436
4,50	14	0,041	57454
4,50	18	0,041	57458
4,50	23	0,041	57453
4,50	28	0,041	57450
4,50	36	0,041	57456

Rated burst: 16 atm.  
 Average burst pressure: 22 atm.  
 Device restricted for use by a Doctor or on the order of a physician.  
 Prior to use, please read all precautionary statements and possible complications specified in attached instructions for use.

# Active®

Paclitaxel DES

Delivering safer efficacy  
 to where nobody else can



Low crossing profile and  
**EXCELLENT TRACKABILITY**

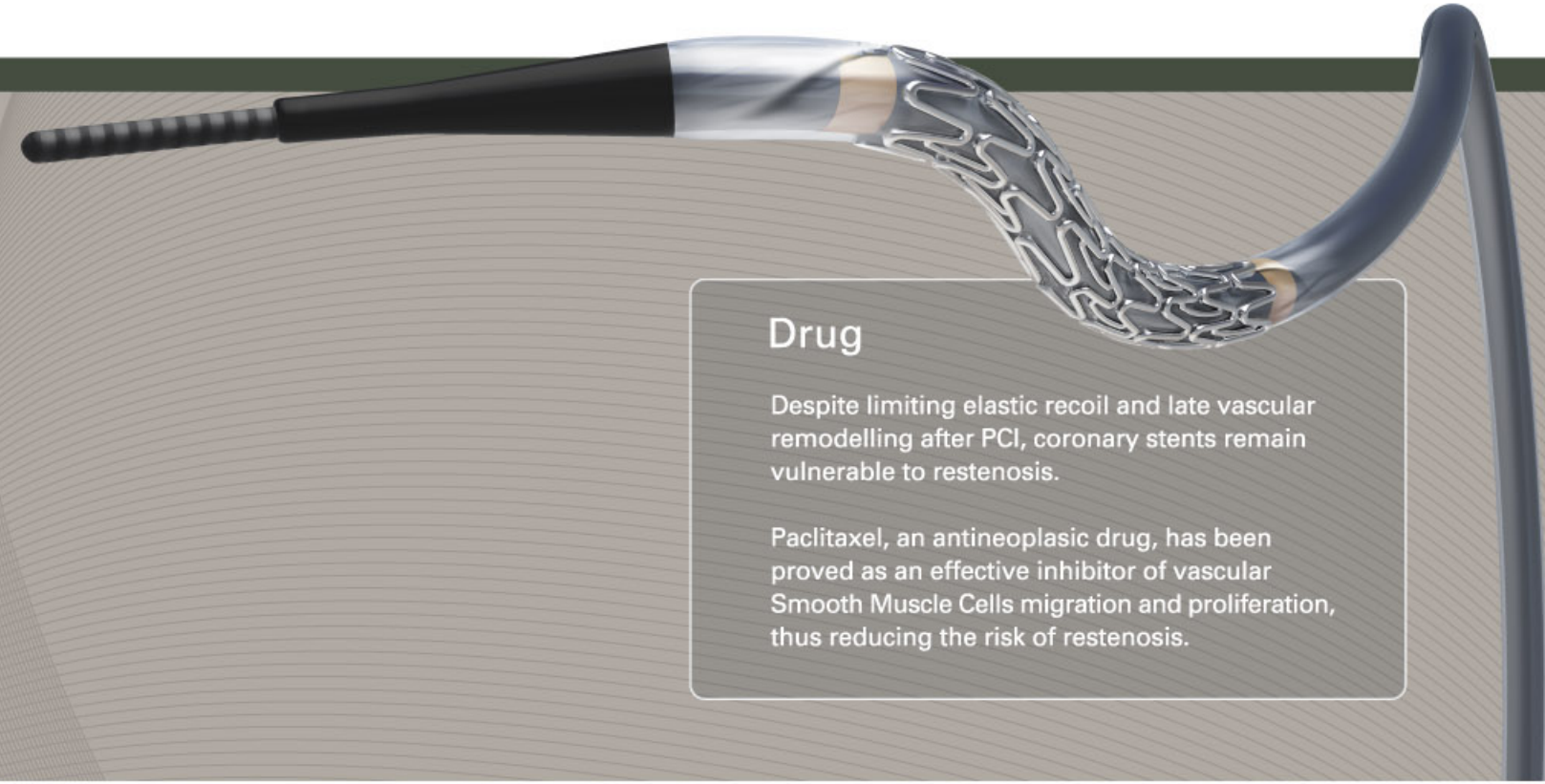




# Active®

Paclitaxel DES

Active is a high efficacy paclitaxel drug eluting stent indicated in patients that have coronary vessel lesions with high risk of restenosis.



## Drug

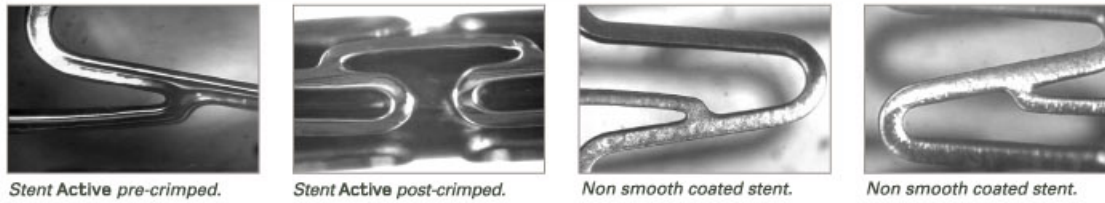
Despite limiting elastic recoil and late vascular remodelling after PCI, coronary stents remain vulnerable to restenosis.

Paclitaxel, an antineoplastic drug, has been proved as an effective inhibitor of vascular Smooth Muscle Cells migration and proliferation, thus reducing the risk of restenosis.

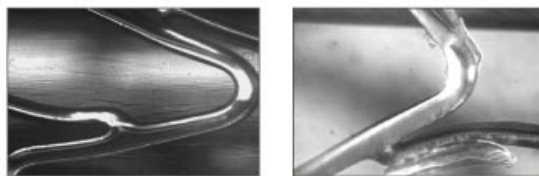
### Unique drug delivery technology

P-5 is a specifically designed polymer for use in DES devices that ensures an homogeneous drug release.

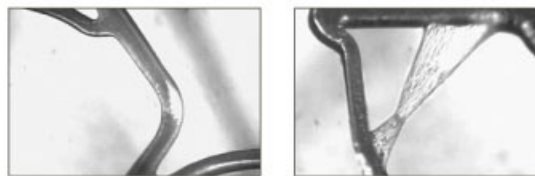
#### SMOOTHNESS



#### NO CRACK-BRIDGING



#### NON STICKY

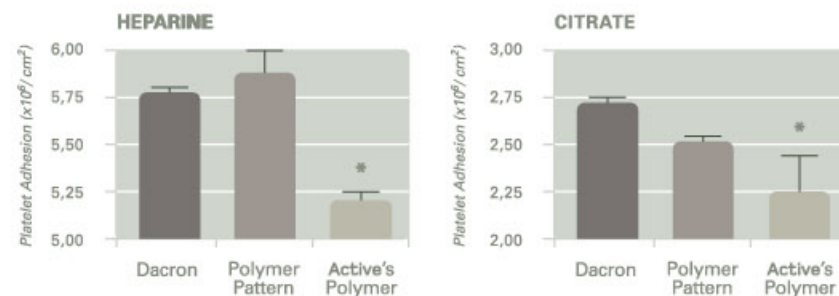


P-5 is a Triflusal based polymer with antiaggregant and anti-inflammatory properties.

#### PLATELET ADHESION "IN VITRO" / STATIC CONDITIONS

- Does not induce platelet deposition.
- Statistically significant reduction of platelet deposition vs Dacron and Control Polymer.
- Does not induce changes in coagulation parameters (PT, aPTT, fibrinogen).
- Does not induce apparent thrombotic occlusions.
- Is not haemolytic.

Catalan Institute of Cardiovascular Sciences (Barcelona)

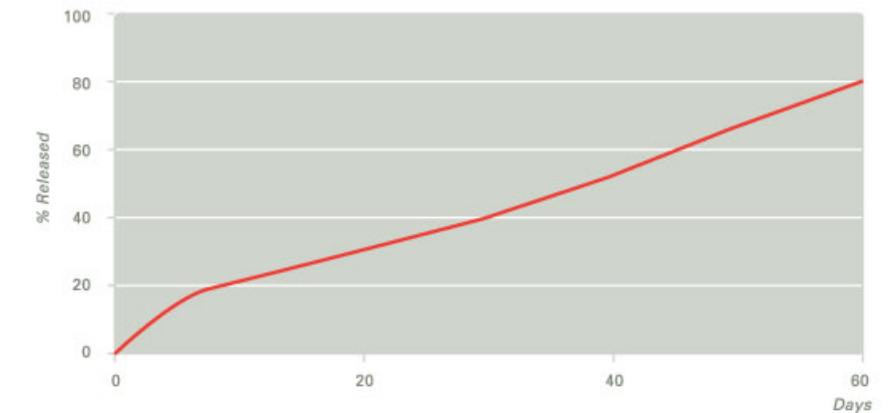


### Drug delivery technology

Polymer P-5 and the drug delivery technology used makes Active a safer DES.

Low drug loading (0,4µg/mm<sup>2</sup>) and a complete and controlled release may reduce the risk of late thrombosis.

#### DRUG RELEASE CURVE



### A perfect fit for every vessel

Active and Active Small use highly flexible stent platforms (Apolo 3 / Apolo Small) with a low crossing profile, easing navigation through most complex vessel profiles.

Active and Active Small's radial force combined with their flexibility provide strong support in straight and curved vessels.

Active and Active Small's designs, with their wide range of sizes, allow daily PTCA practice to reach big and small vessels with same excellent performance.

Active - Ø 3,00mm - 4,50mm / L. 9mm - 36mm

Active Small - Ø 2,00mm - 2,75mm / L.9mm - 36mm

#### Active Small (5 crowns - 2 connectors)



#### Active (6 crowns - 3 connectors)

