

Proximal Segment

Pushability and Torque through its firmness.

Intermediate Segment

Shape memory and excellent support due to its intermediate hardness.

Distal Segment

The segment smoothness provides a safe cannulation with high shape retention.

Access® guiding catheter

Access Guiding catheter							
Judkins Left			Judkins Right				
	5F	6F	7F		5F	6F	7F
JL 3,5	5201355	5201356	5201357	JR 3,5	5202355	5202356	5202357
JL 4	5201405	5201406	5201407	JR 4	5202405	5202406	5202407
JL 4,5	5201455	5201456	5201457	JR 4,5	5202455	5202456	5202457
JL 5	5201505	5201506	5201507	JR 5	5202505	5202506	5202507
JL 6	5201605	5201606	5201607	JR 6	5202605	5202606	5202607
Amplatz Left			Amplatz Right				
	5F	6F	7F		5F	6F	7F
AL I	5203015	5203016	5203017	AR I	5204015	5204016	5204017
AL II	5203025	5203026	5203027	AR II	5204025	5204026	5204027
AL III	5203035	5203036	5203037				
Extra Support Left			Extra Support Right				
	5F	6F	7F		5F	6F	7F
ESU 3,5	5205355	5205356	5205357	ESU RCA	5208015	5208016	5208017
ESU 3,75	5205375	5205376	5205377				
ESU 4	5205405	5205406	5205407				
ESU 5	5205505	5205506	5205507				
Multi Purpose							
	5F	6F	7F		5F	6F	7F
MP A	5206015	5206016	5206017				
MP B	5206025	5206026	5206027				

Access Guiding catheter WITH SIDE HOLES							
Judkins Left			Judkins Right				
	5F	6F	7F		5F	6F	7F
JL 3,5	6201355	6201356	6201357	JR 3,5	6202355	6202356	6202357
JL 4	6201405	6201406	6201407	JR 4	6202405	6202406	6202407
JL 4,5	6201455	6201456	6201457	JR 4,5	6202455	6202456	6202457
JL 5	6201505	6201506	6201507	JR 5	6202505	6202506	6202507
JL 6	6201605	6201606	6201607	JR 6	6202605	6202606	6202607
Amplatz Left			Amplatz Right				
	5F	6F	7F		5F	6F	7F
AL I	6203015	6203016	6203017	AR I	6204015	6204016	6204017
AL II	6203025	6203026	6203027	AR II	6204025	6204026	6204027
AL III	6203035	6203036	6203037				
Extra Support Left			Multi Purpose				
	5F	6F	7F		5F	6F	7F
ESU 3,5	6205355	6205356	6205357	MP A	6206015	6206016	6206017
ESU 3,75	6205375	6205376	6205377	MP B	6206025	6206026	6206027
ESU 4	6205405	6205406	6205407				
ESU 5	6205505	6205506	6205507				

Device restricted for use by a Doctor or on the order of a physician.
Prior to use, please read all precautionary statements and possible complications specified in attached instructions for use.



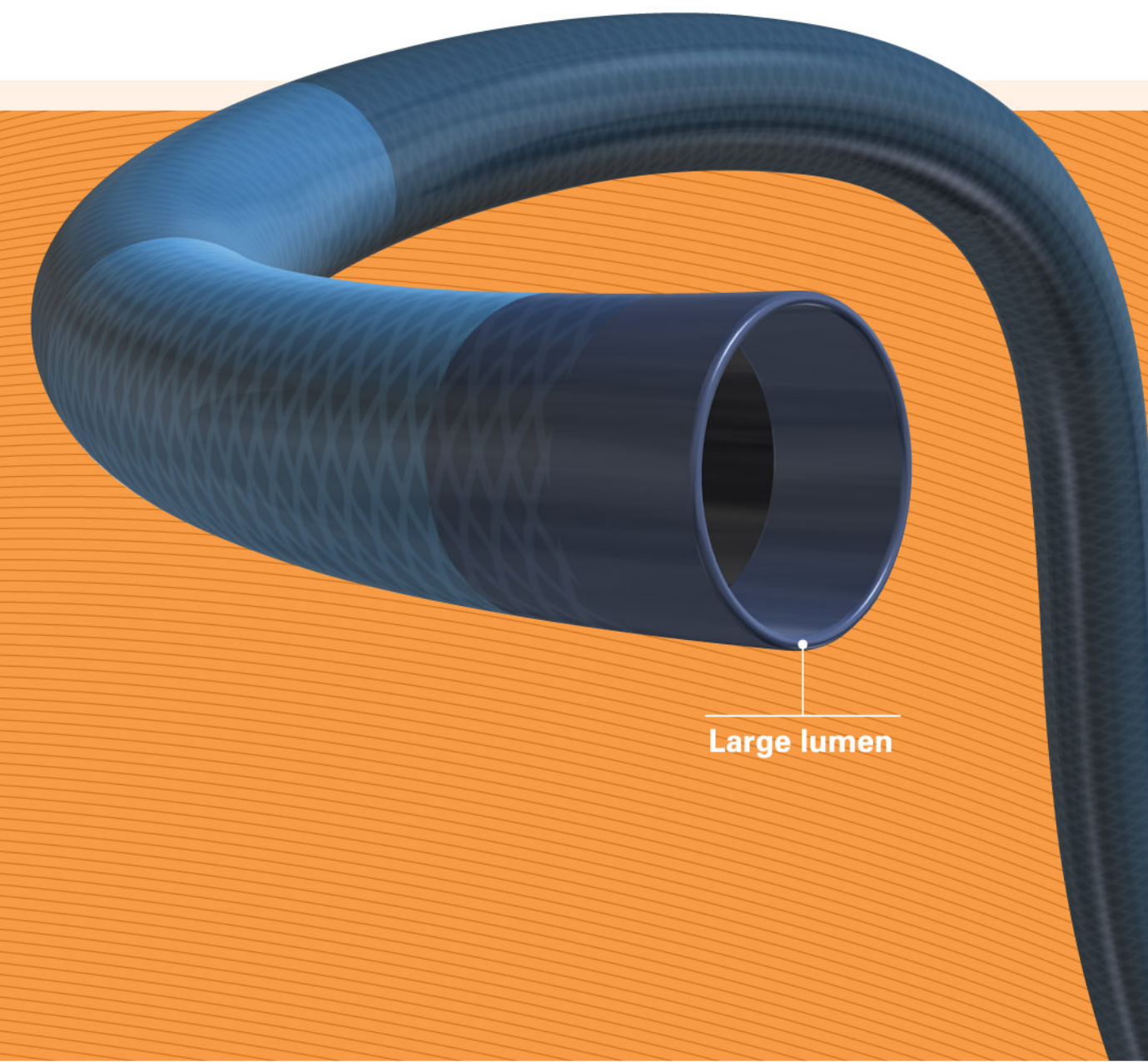
IBERHOSPITEX S.A. Avda. Catalunya, 4 - 08185 Lliçà de Vall, Barcelona, Spain
Tel +34 93 843 60 34 - Fax +34 93 843 61 11 - info@iht.es - www.iht.es



Access®

Guiding catheter

Excellent design
for unique performance



Large lumen

09/2009

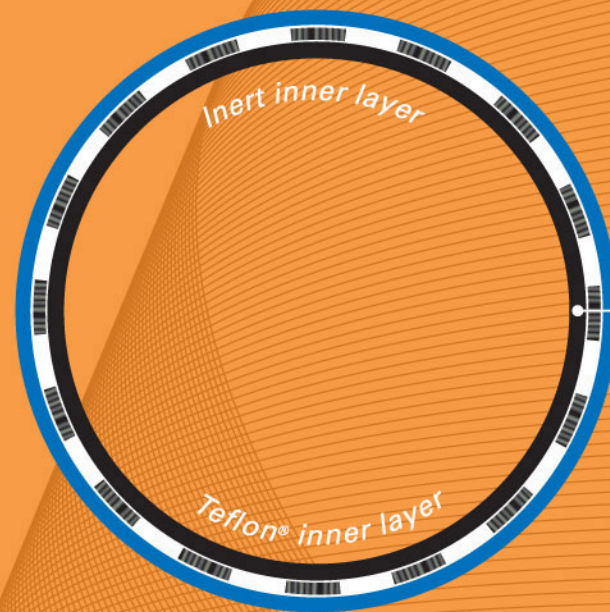


Access[®]

Guiding catheter

Access is a guiding catheter for PCI that best combines the key characteristics for an excellent performance:

- Large lumen
- Best slippery
- Excellent support
- Soft tip



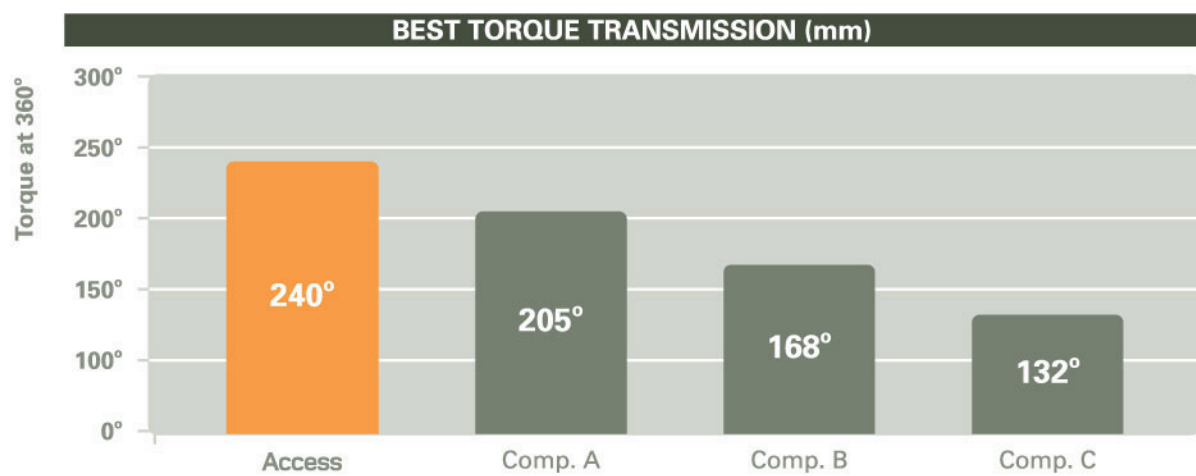
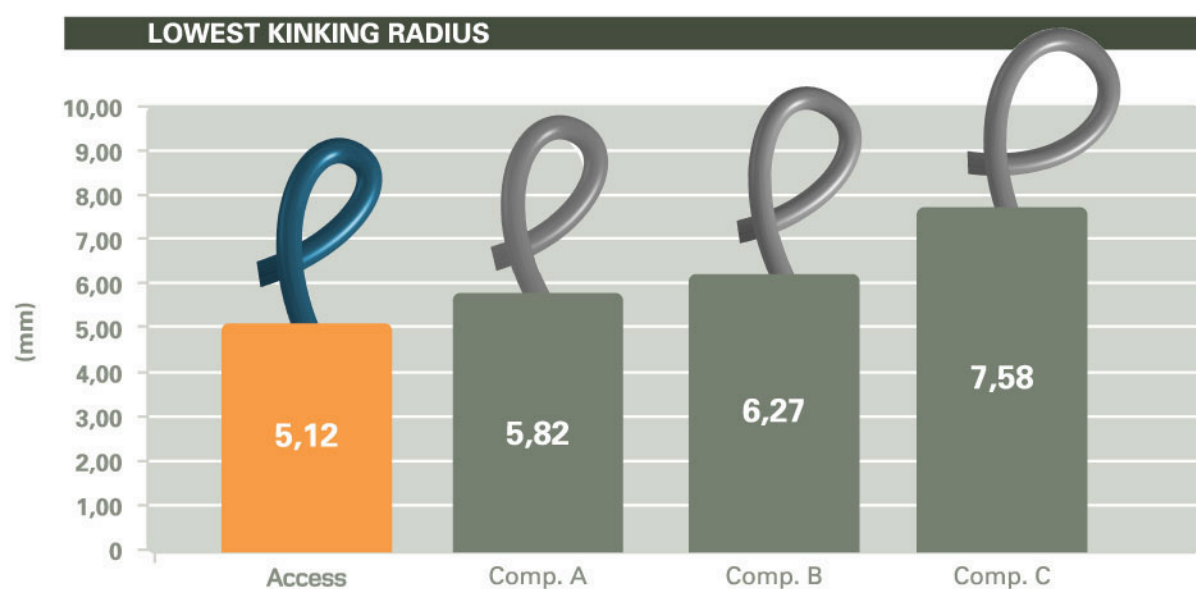
Teflon[®]

Material with the lowest friction known in nature. Combining slippery with the highest bio-compatibility properties.

Flat/Flat braiding
Space saving for increased inner lumen.

Access[®] Guiding catheter

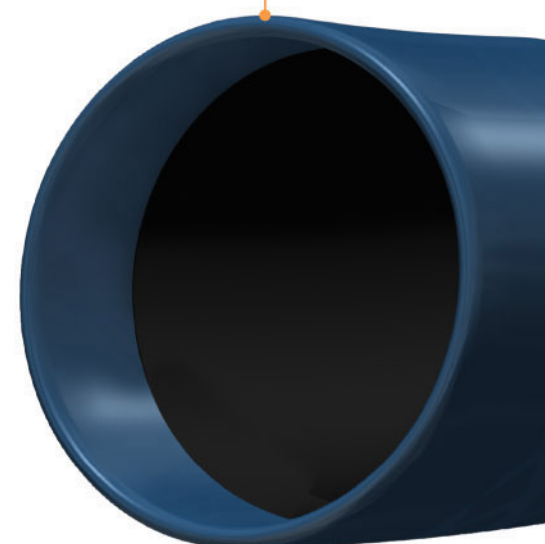
Excellent trackability



Inner Diameter

7 F	0,081"
6 F	0,071"
5 F	0,058"

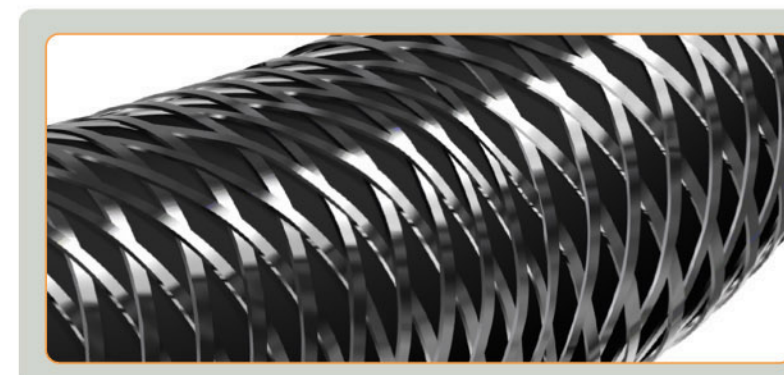
Soft tip



Unique Configuration

Flat/Flat braiding with a 2-2 alternation combining high stiffness with maximum flexibility provides a balance of:

Pushability - Torque - No kinking - Support



WIDE RANGE OF SHAPES

