

LDR, LDR Spine, LDR Medical, BF+, BF+(ph), EasySpine, Lamintome, MC+, Mobi, Mobi-C, Mobi-L, Mobidisc, ROI, ROI-A, ROI-MC+ and ROI-T are trademarks or registered trademarks of LDR Holding Corporation or its affiliates in France, the United States and other countries.

www.ldrmedical.com



France
Technopôle de l'Aube BP 2
10902 Troyes Cedex 9
France
+33 (0)3 25 82 32 63

China
Unit 08, Level 16, Building A,
Beijing Global Trade Center #36
Beijing Third Ring Road
North Third Ring Road
East, Dongcheng District,
Beijing, China, 100013
+86 10 58256655

Brazil
Rua Bela Vista, No 77, Centro
Sao Bernardo do Campo
SP, CEP 09715-030
Brazil
+55 11 43327755

United States
4030 West Braker Lane, Suite 360
Austin, Texas 78759
512.344.3333

REF: IR-A B1 EN 04.2008 A



ROI-A™

ANTERIOR APPROACH IMPLANT

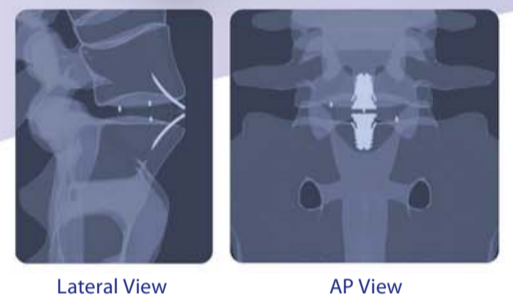
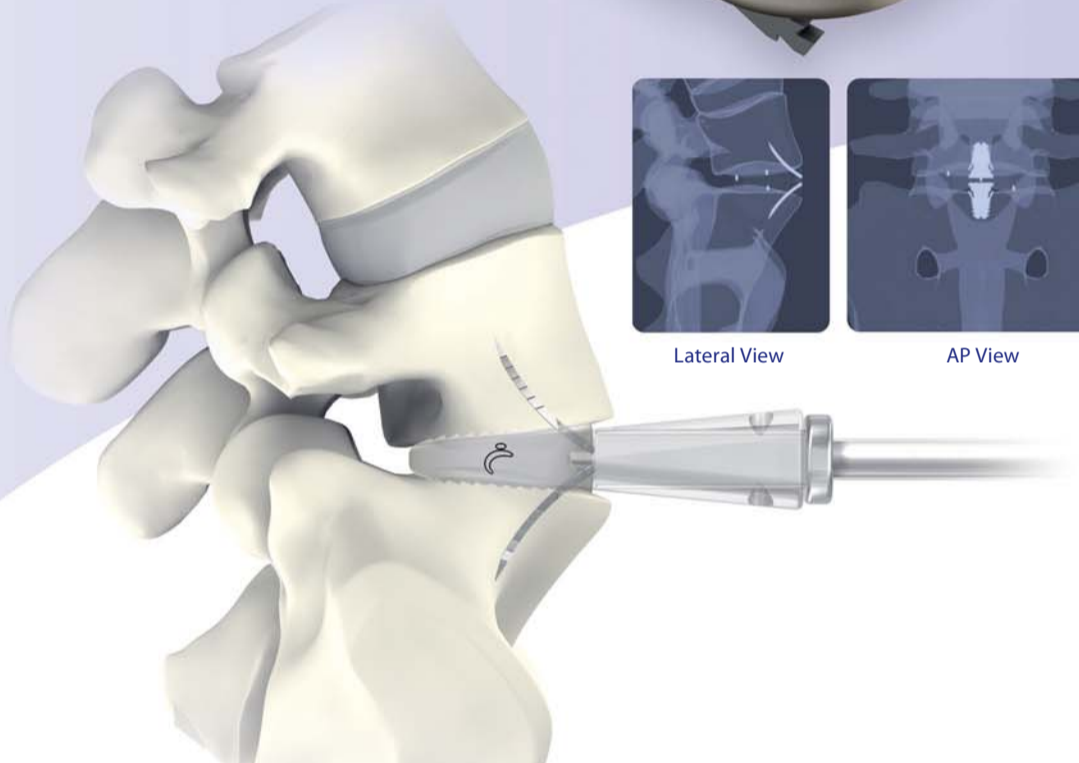
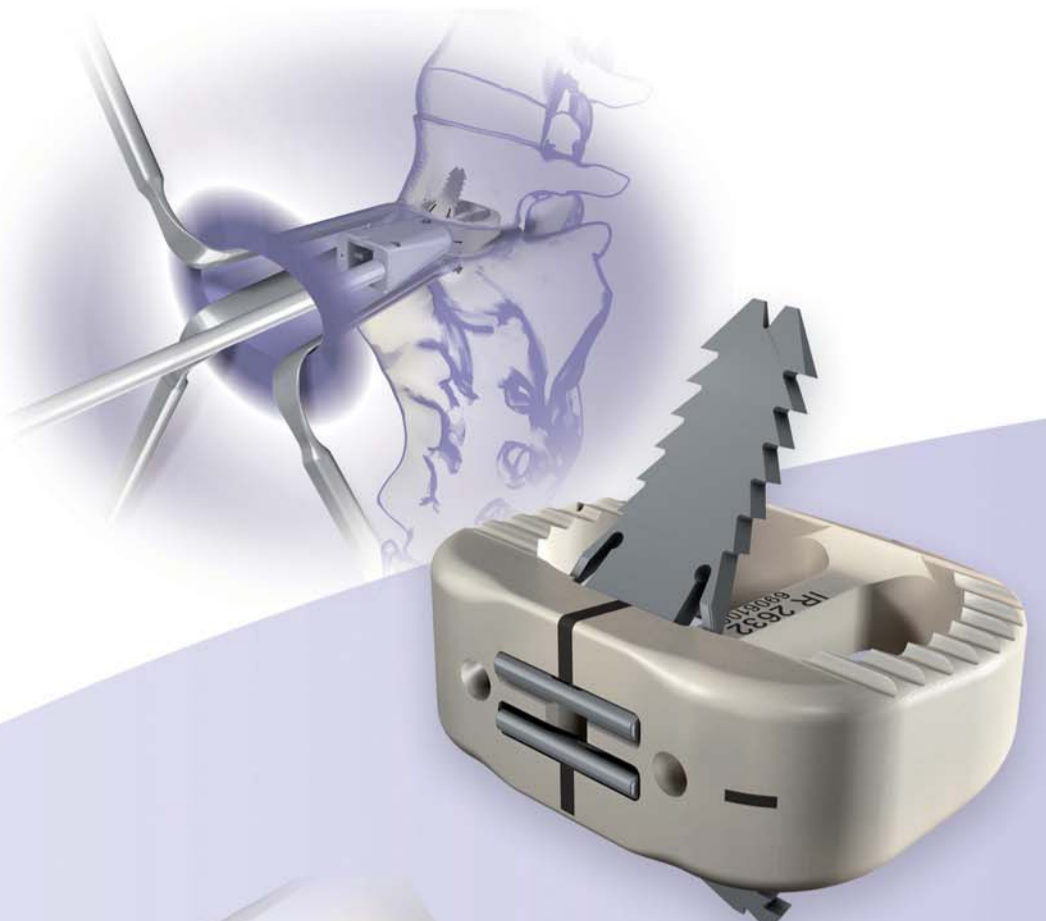


ROI-A™

ANTERIOR APPROACH IMPLANT

Features

- Multiple footprints, lordosis, and heights as well as three anchoring plate lengths for optimized fit and stability in various patient anatomy
- Optimized implant shape for peripheral coverage of the endplates and strong support on cortical bone
- Tapered posterior shape to ease insertion
- Middle beam for strength during surgical placement
- Large central graft space
- PEEK-Optima® material for biocompatibility and radiolucency and Tantalum markers for verification of implant positioning
- Sterile packaging for assured product quality and absolute traceability

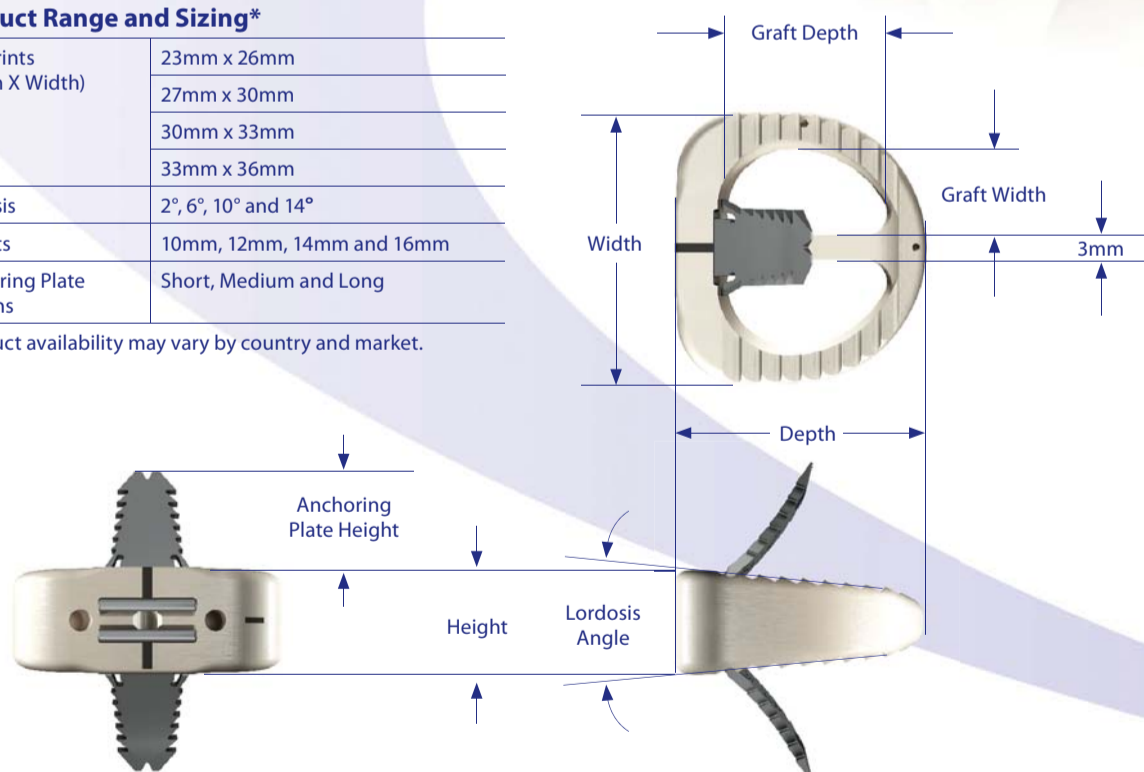


Dimensions

Product Range and Sizing*

Footprints (Depth X Width)	23mm x 26mm
	27mm x 30mm
	30mm x 33mm
	33mm x 36mm
Lordosis	2°, 6°, 10° and 14°
Heights	10mm, 12mm, 14mm and 16mm
Anchoring Plate Lengths	Short, Medium and Long

*Product availability may vary by country and market.



Featuring verteBRIDGE™ Anchoring Technology

- Novel **stand-alone** technology
- **Zero-profile** design with no hardware protruding anterior of the vertebral bodies
- **Self-locking** anchoring plates designed for initial and long-term stability
- Anterior **mini-open** technique for insertion in the transverse plane
- Implanted with just **2 instruments** and **2 easy steps**
- **Adjustable anterior-posterior placement** prior to insertion of the anchoring plate
- **Self-guided, curved** anchoring plates keep the implant and bone graft in compression
- Inserter provides **protection of vascular structures** during anchoring plate placement